

Fall 2003

SPECTRUM



ISTA and ExxonMobil Congratulate
Jill Carter, ExxonMobil Excellence
in Secondary Science
Teaching Awardee

ILLINOIS
SCIENCE
TEACHERS
ASSOCIATION
Executive Board

Marylin Lisowski
President

Eastern Illinois University
600 Lincoln Ave.
Charleston, IL 61920
217-581-7830
cfmfl@eiu.edu

Edee Norman Wiziecki
Past-President

Education, Outreach and Training
National Center for
Supercomputing Applications
605 East Springfield Avenue
Champaign, Illinois 61820
(217) 244-5594
edeew@ncsa.uiuc.edu

Raymond Dagenais
President-elect

Illinois Math and
Science Academy
1500 W. Sullivan Road
Aurora, IL 60506
rjdag@imsa.edu

Kevin Seymour
Vice President

ROE Schoolworks
200 S. Fredrick
Rantoul, IL 61866
217-893-4921
kseymour@roe.k12.il.us

Carl Koch
Treasurer

AECKoch@aol.com

Andy Apicella
Secretary

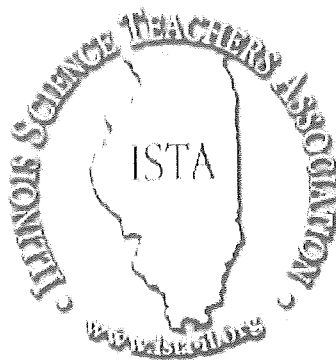
Riverdale High School
9622-256th St. N.
Port Byron, IL 61275
aa2100@riverdale.rockis.k12.il.us

SPECTRUM
JOURNAL OF THE
ILLINOIS SCIENCE TEACHERS ASSOCIATION
Volume 29, Number 2

SPECTRUM is published three times per year, in Spring, Fall and Winter by the Illinois Science Teachers Association, University of Illinois, College of Education, 1310 S. Sixth Street, Champaign, IL 61820. Subscription rates are listed on p. 48.

Send submissions, subscriptions, and inquiries regarding the journal to:

Diana Dummitt
ISTA Executive Director
University of Illinois
College of Education
1310 South Sixth St.
Champaign, IL 61820
(217) 244-0173 (217) 244-5437 FAX
e-mail: ddummitt@uiuc.edu



Cover: Darren Woods, Manager, Joliet Refinery congratulates Jill Carter, the ExxonMobil Excellence in Secondary Science Teaching Awardee. Jill received a beautiful engraved crystal goblet and a check for \$5,000. Photo by ISTA Region 2 Director Larry McPherson.

The Illinois Science Teachers Association recognizes and strongly promotes the importance of safety in the classroom. However, the ultimate responsibility to follow established safety procedures and guidelines rests with the individual teacher.

SPECTRUM IS PRINTED ON RECYCLED/RECYCLABLE PAPER



Spectrum

The Journal of the Illinois Science Teachers Association
Volume 29, Number 2

Fall 2003

Articles

Visit a Challenger Center Near You! / 23

Mellisa Duncan and Janet Moore

Departments

ISTA NEWS

President's Corner / 2

Marylin Lisowski

Around the State / 3

ISBE Update / 10

Marylin Lisowski

Board Buzzzz... / 21

SPECIAL INTERESTS / 28

Diana Dummitt

Managing Editor

Editorial Board

Walter Glogowski,

Layout Design

Raymond Dagenais,

Editorial Consultant

ISTA News

President's Corner

Marylin Lisowski

Professor of Science and Environmental Education, Eastern Illinois University



Dear friends,

As teachers, we fully exemplify the concept of lifelong learning. Whether we choose to continue our explorations of new knowledge and skills in a formal or informal setting, the pursuit for growth is constant. In Illinois, we have ample opportunities for learning through courses, workshops and/or conferences (see the fantastic listing on our website under "calendar").

In addition to these formal offerings, the avenues for learning from our colleagues are immense. We have in our membership some of the most brilliant minds, the most potent powerhouses of energy, and the most vivacious of personalities. One of my favorite teachers always encouraged us to be around "**smart**" people so that our learning would be a continuous happening. One way of tapping into the ideas and success of Illinois' "**smart people**" is to see them in action at our Convention in July 2004 (check out the convention details in this issue and on our website).

A part of the learning process for us is to continue in doing what we do best and that is teach and lead. As learning is an active process, we are extending a call to action for your talents and participation in ISTA's various programs. Our Strategic Plan is power packed with many noble goals that we hope will address the needs of science teachers throughout the state. For this to happen, we need you to be a part of the team that can make great things happen (read all about it on our website and volunteer for one of the committees listed on pages 16-17).

Within our state there are tremendous resources for assisting us in our lifelong learning journey and this year we are going to make concerted efforts to focus on strengthening partnerships with Professional agencies and organizations. NSTA this year is emphasizing the value and need for Partnerships and one of the most treasured partnerships we could have is with our State Board of Education. With the collective wisdom, experience

and insights of science experts as ISBE's Gwen Pollock and Pam Stanko as well as others, our mission to advocate for the needs of science teachers can advance a step further (check out news from ISBE in Gwen's article in this issue).

ISTA is a membership organization and quite simply, we need your energy, involvement and ideas. Please feel that this is your organization and that your very competent and dynamic representatives on the Board are there to assist and work with you to make this organization a vibrant and helpful one to you as you make your great strides as a nurturer, leader, guide and teacher. It is a phenomenal honor to be able to work with you and please accept my thanks and appreciation for all that you do and make happen in education. Please feel free to contact me on your wishes, plans and hopes for ISTA.

Wishing you countless opportunities of exploration and wonder,

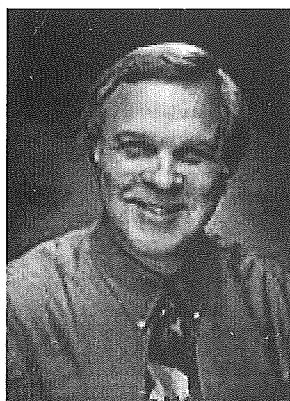
Marylin Lisowski

Around the State

*Congratulations to our 2003 Illinois State Science finalists
Presidential Awards for Excellence in Science Teaching
(Grades 7-12)*



Jill F. Carter
Pekin Community
High School



Tim McCollum
Charleston Middle
School



Tracy Trimpe
Havana Junior
High School

*Join me in congratulating these outstanding teachers
for their excellence in teaching and wishing them "Good
Luck" at the National level.*

*Thanks to the Illinois state committee for the many
hours they spent evaluating the written and video
portions of the applications. (Thanks for your
hospitality, too, Nancy, for hosting the committee at
your house.) If you are a K-6 teacher, this is
YOUR year. Go today to the website:
www.nsf.gov/pa, have your principal or another
teacher fill out the Nomination Form and get your
application done!*

Diana Dummitt

PAEMST State Coordinator, Science

2003 Illinois PAE-Science Judges

Nancy Nega

ISTA Awards Chair

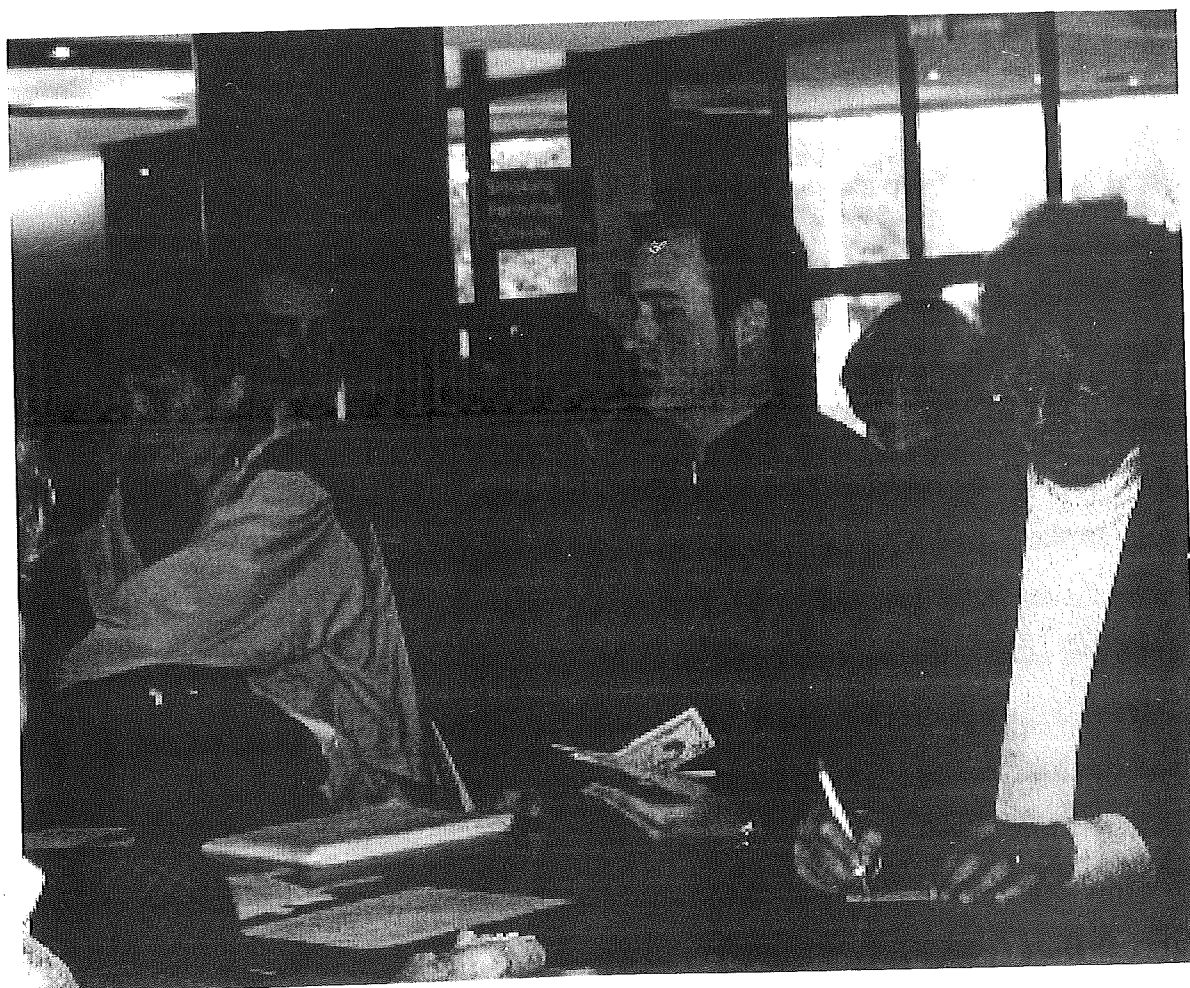
Linda O'Connor

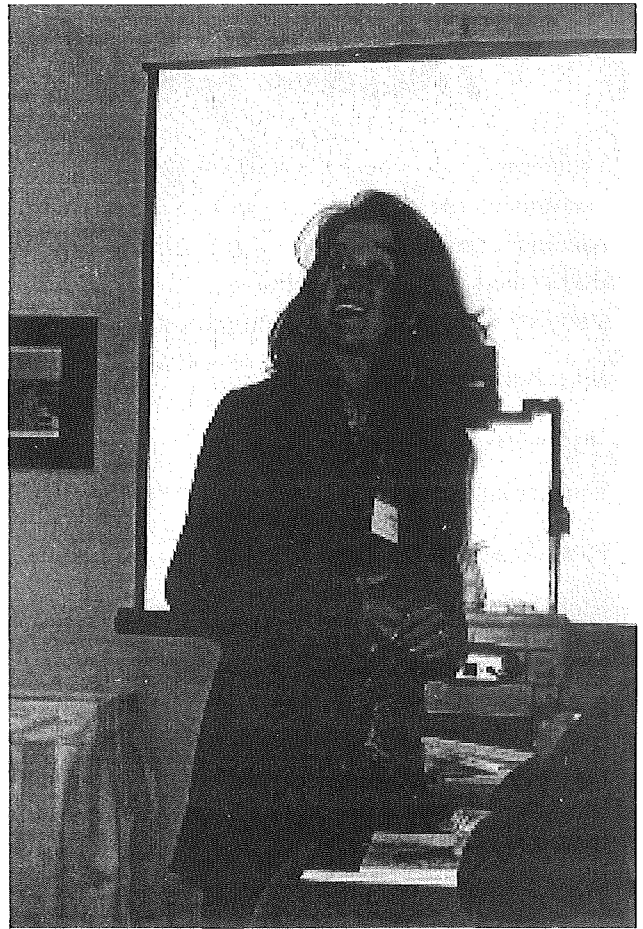
Katie Kendall

Andy Apicella



ISTA 2003
Peoria
Were
You
There?





Thank you!

I'd like to thank the 2003 ISTA Convention committee for all their hard work. We were fortunate to have a group of very dedicated people that pulled together to make this convention a success! The committee members include:

Like Bonomo

Bob Carter

Sandy Gasparovich

Ken Grodjesk

Rich Mitchell

Nancy Nega

Brian Poelker

Julie Schimmelpfennig

Karen Zuckerman

Thanks also to the individuals, including our board members, who volunteered their time to help us out at registration and the ISTA booth in the exhibit hall. You were truly appreciated!

Jill Carter

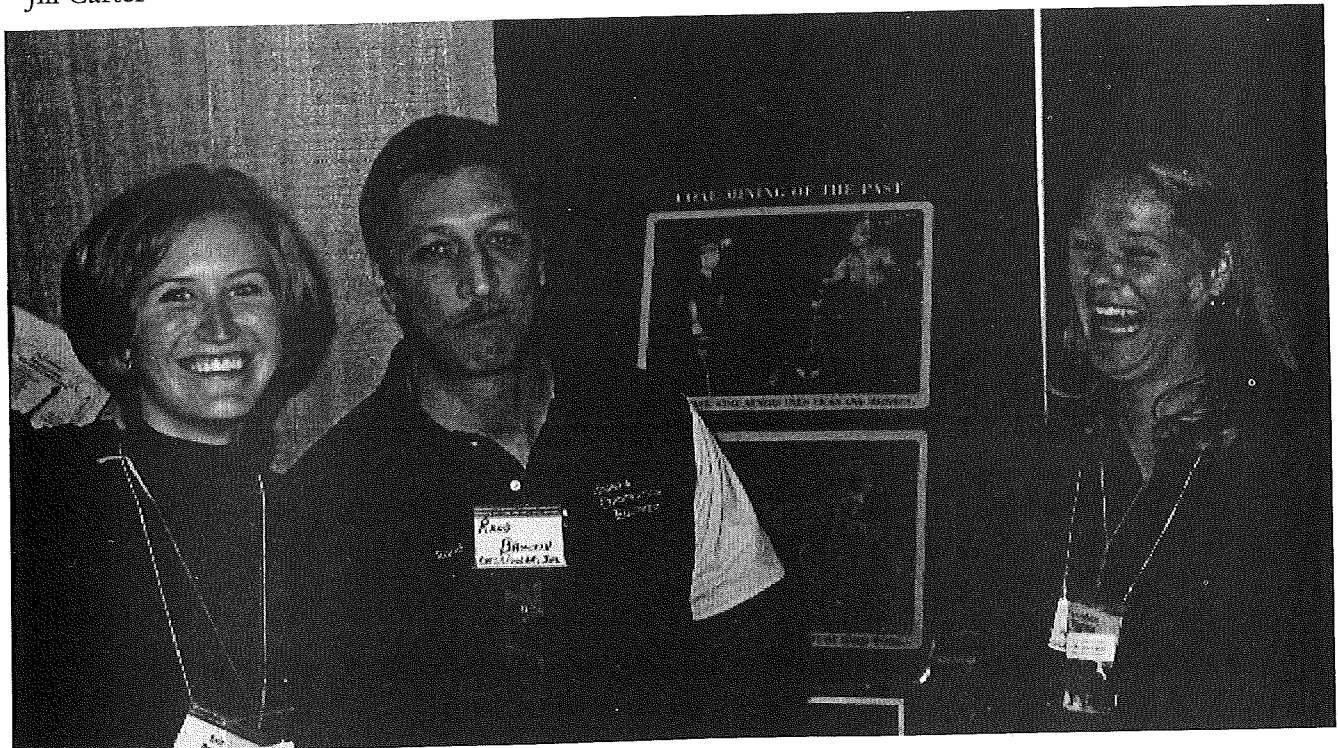
Join Us for all the
Fun in 2004!
Interstate
Center
Bloomington

July 12-14, 2004

Contact Diana
Dummitt if you would
like to serve on the
committee.

Call for Presentations
now on the ISTA
website.

www.ista-il.org



Thanks to all of our Wonderful 2003 Convention Vendors!

Ag in the Classroom / Illinois Farm Bureau

AIDEX/ LJ Enterprises

BEA Electro Sales

Bio-Rad Laboratories

Buckle Down Publishing Co.

Cambridge Physics Outlet

Carolina Biological Supply Co.

Caterpillar

CLEAN WATER CELEBRATION

Delta Education/CPO Science

Earth Foundation

Eastern Illinois University

EDVOTEK, Inc.

Enironmental Education

Association of Illinois

Facilitating Coordination in Ag. Education

Fermilab Education Office

Fisher Scientific Education

Flinn Scientific, Inc.

Forest Park Nature Center

Frey Scientific

Getting Excited About Science

Glencoe/McGraw-Hill

GLOBE FEARON

Great Source Education Group

Groundwater Education

Harcourt School Publishers

Holt, Rinehart and Winston

Houghton Mifflin

I-DNR Education

Illinois Association of Chemistry Teachers

Il Assoc of Aggregate Producers

IL Dept. of Commerce and Economic

Opportunity

IL-DCCA-Recycling

IL-Petroleum Resources Board

Illinois Association of Biology Teachers

Illinois Building a Presence for Science

Illinois Chemical and Fertilizer Association

Illinois Environmental Protection Agency

Illinois NET

Illinois State Geological Survey

Institute for Ecological Field Studies

It's About Time

JASON Foundation for Education

Kendall/Hunt Publishing Company

Lab-Aids, Inc.

Lakeview Museum of Arts & Sciences

Learning Multi-Systems

Macmillan/McGraw-Hill

McDougal Littell/Houghton Mifflin

MicroTech Microscope Sales and Service

Mrs. B's Teacher Supplies

NASCO

Nebraska Scientific

Nike/ Eco Educators

NSTA District 12

Pasco scientific

Pitsco Lego

Prentice Hall

Qwizdom, Inc.

Rivers Project

Riverside Scientific, Inc.

Sargent-Welch

School Technology Resources

Science Companion

Science Fair Supply Co.

Science Kit and Boreal Laboratories

Scott Foresman

SRA-McGraw Hill

Swift Instruments, Inc.

Synergistic Science

Texas Instruments

The Science Connection

The Scope Shoppe, Inc.

U. S. Space Camp and Aviation Challenge

UIUC Dept of Crop Sciences

Usborne Books

Vernier Software & Technology

Virtual Learning Systems

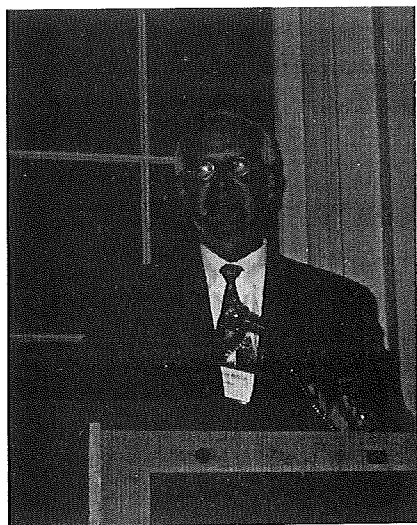
WARD'S Natural Science Establishment

Wildlife Prairie State Park

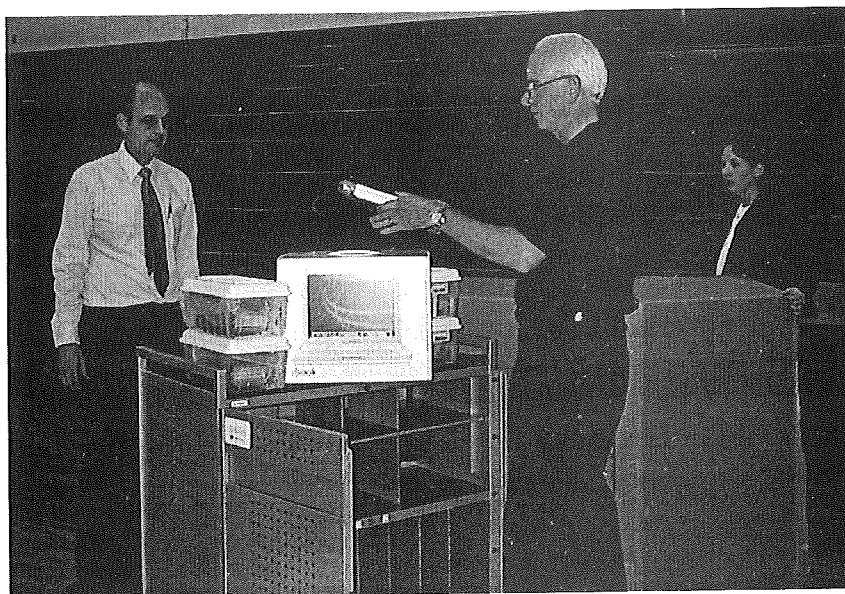
Worldwide Youth in Science & Engineering

NSTA ExxonMobil

Illinois Building a Presence for Science



J. Patrick McGinn, ExxonMobil Midwest Public Affairs Manager, welcomes ISTA attendees at the Awards Luncheon.

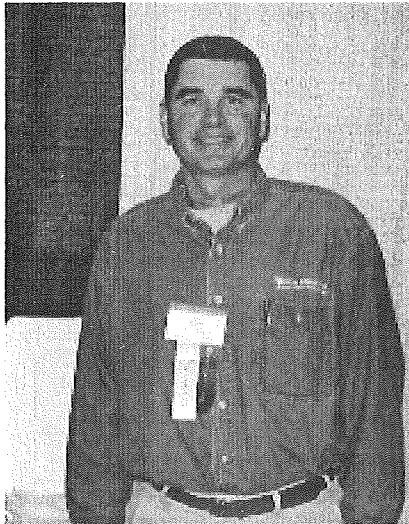


Terry Sullivan, Patrick McGinn, and Kendra Carroll at Shiloh School gymnasium unpacking the \$20,000 Apple Science Curriculum Mobil Lab awarded to the school for 2003.

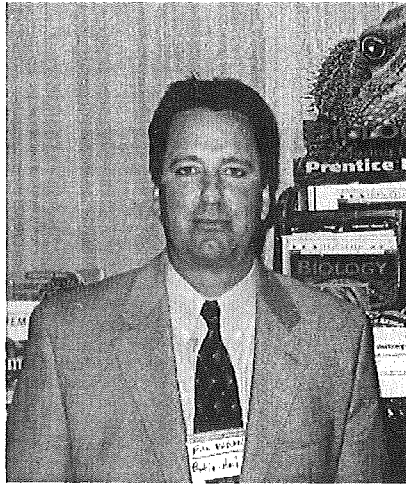


Jill Carter, ExxonMobil Excellence in Secondary Science Teaching Awardee holding her crystal goblet and check for \$5,000. Jill's students from Pekin High School were on hand to share this special moment.

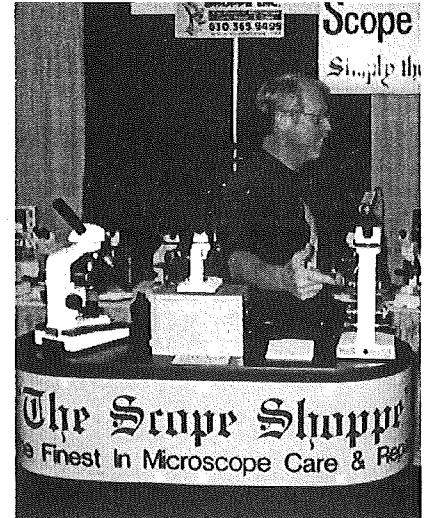
Many Thanks to Our Illinois Building Presence for Science State Partners



Tom Pence, Delta Education

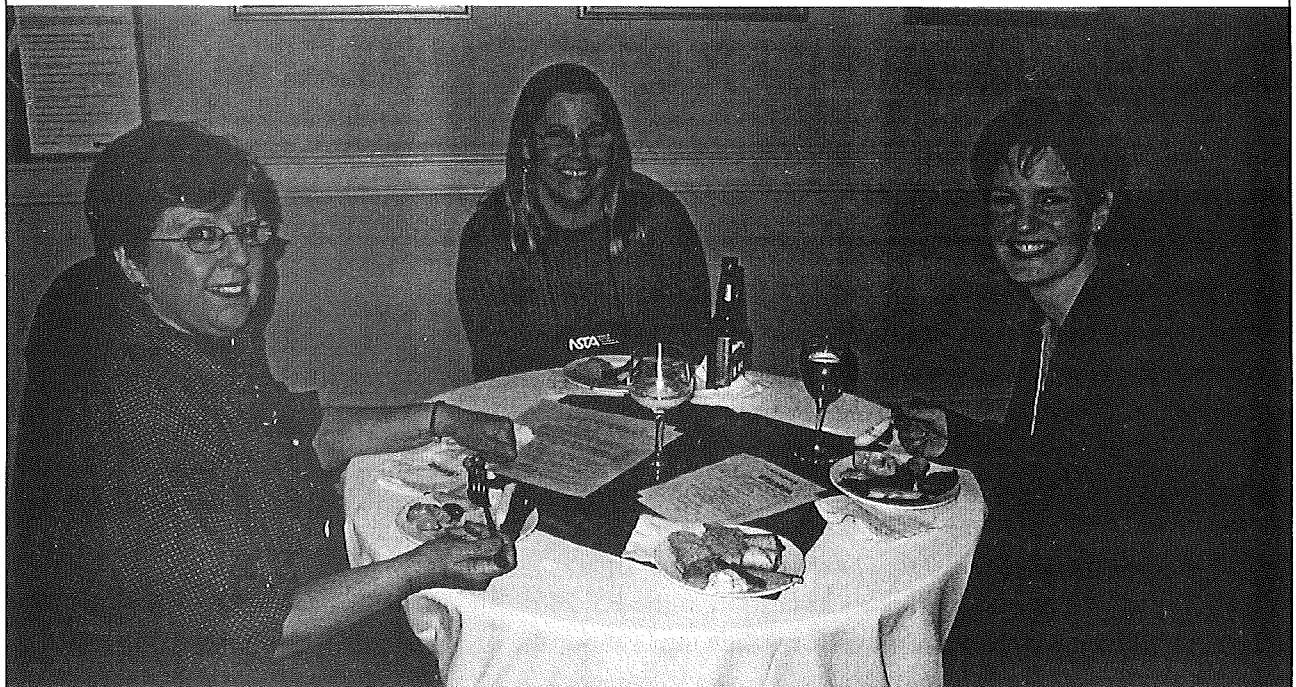


Rich Phelan, Prentice Hall



Pat Schlinder, The Scope Shoppe

Join your fellow ISTA members at NSTA
Atlanta Hilton Hotel, April 1, 2004, 4:00 - 6:00 pm
Illinois Science Teachers Association Member Reception
sponsored by Prentice Hall



ISTA Members relax at the Prentice Hall Reception at the 2003 NSTA Convention, Philadelphia.

ISBE U^Pdate

Gwen Pollock

Science,
Illinois State Board of Education

News from ISBE Science Curriculum and Instruction

I appreciate the opportunity to share news with the favorite educators of Illinois. There are a lot of little tidbits that I would like to share with you through this venue. Please contact me for more information about any of the details.

First: Updates on the Mathematics and Science Partnerships program. Let me say thank you to the teachers who participated in the on-line needs-assessment survey for mathematics and science teachers. We had just over 2000 teachers to respond to this survey—far more than we ever imagined. The information that you provided will be extremely valuable. As of this writing we are expecting approximately 30 proposals for our Mathematics and Science Partnerships. The review process will lead to recommendations and negotiations for the awards by January 2. These partnerships will be focusing on mathematics, science and engineering content expertise through access to experts, their technologies and resources offered through summer 2004 institutes and school year follow-up sessions. I'll share more about the program in the next issue.

Second: Let's think about civics hats and dollar signs for a while—You need to be aware of the legislation that was passed last spring by our legislators which authorized a mathematics and science block grant program (SB 908). It authorized professional development and materials and equipment for K-12 mathematics and science classrooms. ISBE will be developing the rules and regulations for this legislation very shortly. No funding was appropriated to this legislation, however for FY 2004. There are some tentative projections including funding for this legislation in the FY 2005 budget. The superintendent has asked for public input about the budget issues (<http://spr2.isbe.state.il.us/intranet/Messages/message10-24-03.htm>).

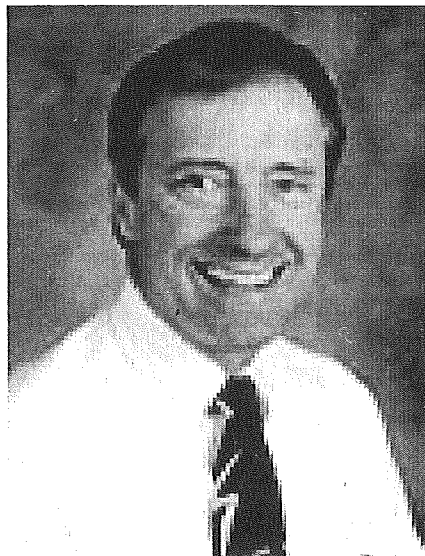


Another legislative and fiscal issue for your consideration is the NCLB, Title II, Part A Teacher Quality funds. Consult with your administration about the availability of these funds for your professional development needs.

Third: ISBE has prepared a CD for Science (well, all of the learning areas, of course). These CDs include the Learning Standards for Science, the performance descriptors and sampler assessments for all ten science standards at all ten designated 'stages'. These will be distributed through your regional offices or intermediate service centers. Additional copies are available. They may be copied freely.

Again, thank you for taking care of our learners in science and becoming the best that you can be. Contact me with suggestions or questions.

Thanks, Denny,
for your years of
service to ISTA —
We will miss you!



Denny Moore
John Deere Middle School
Former Region 2 Director

Welcome to our
Newest ISTA
Board Member!



Laverne Logan,
Western Illinois University
New Region 2 Director

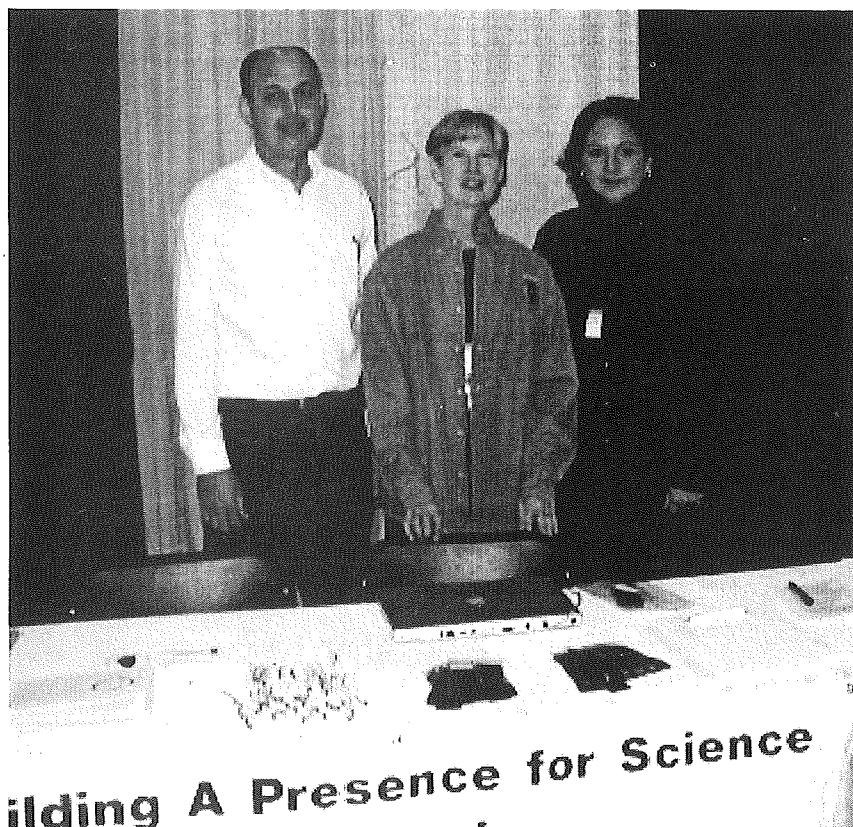
...And New
Professional
Development and
Partnerships Committee
Members!



Linda O'Connor, Chair
Elmhurst District #205



Gwen Pollock, ISBE



Kendra Carroll and Terry
Sullivan (Shiloh School
District) 2003 ExxonMobil
Elementary Technology
Awardees and Susan
Golden, Region 4 Director
(in the center), welcome
attendees to the Illinois
Building a Presence booth at
the ISTA Convention.

*Congratulations,
Kendra and
Terry!*

ISTA/SIUC

Science in the South

The Eighth Annual Regional Conference on Science Education
March 5, 2004

Join over 300 teachers for:

- Hands on activities
- Networking
- Sharing
- Activity-Oriented Workshops
- Make-and-Takes
- Technology
- Exhibits

CPDUs

Earn up to 3.0 Continuing Professional Development Units (CPDUs) for participating and up to 14.0 CPDUs for presenting.

Presentations

Dozens of workshops are available for every level and every topic area! All educators are invited to present any science-related topics that would be of interest to K-12 science teachers. Each presenter will receive a complimentary conference registration and lunch. For further presenter information, contact the Division of Continuing Education at (618) 536-7751 or visit our website at: <http://www.dce.siu.edu>.
Presenter Application Deadline: December 15, 2003

Registration Information

The conference registration fee is \$65 and includes conference materials, exhibit viewing, refreshments, lunch, and ISTA annual membership for 2004.
Participant Registration Deadline: February 26, 2004

Cancellation Policy

A refund, minus a \$25 processing fee, will be issued if requested prior to February 27, 2004.

Conference Schedule

7:30-8:30 a.m.	Registration Check-in
8:30-9:30 a.m.	Session I Presentations
9:30-10:00 a.m.	Exhibit Viewing & Refreshment Break
10:00-11:00 a.m.	Session II Presentations
11:00-11:30 a.m.	Exhibit Viewing & Refreshment Break
11:30-12:30 p.m.	Session III Presentations
12:30-1:30 p.m.	Luncheon Door Prizes

Building a Presence at Science in the South

Become a Science Point of
Contact for your school
and receive a special gift
at the conference!

Register to be a
Point of Contact at:
nsta.org/bap

Science in the South-2004

Registration Form

You may register online at <http://www.dce.siu.edu>

First Name: _____

Last Name: _____

SSN: _____

School: _____ Grade Level _____

School Address: _____

City, State, Zip: _____

Day Phone: _____

Evening Phone: _____

Fax Number: _____

Email: _____

Payment Information

Fees: Participant \$65 (Includes Lunch and ISTA membership)

Check one: I plan on attending lunch ____ Yes ____ No

____ Departmental Voucher Voucher # _____

Department Contact Person: _____

Phone # _____

____ Personal Check Check # _____

____ Credit Card # _____ Exp Date: _____

Name on Card (PRINT): _____

Please return payment to:

Science in the South Conference

Division of Continuing Education

Washington Square Bldg C, Mailcode 6705

Southern Illinois University

Carbondale, IL 62901

PHONE: (618) 536-7751

FAX: (618) 453-5680

EMAIL: kenr@siu.edu

ONLINE: www.dce.siu.edu

Additional Program Information and On-line Registration forms can be found at:
<http://www.dce.siu.edu>

Please return this form by February 26, 2004, to help us plan the meeting. Lunch will NOT be guaranteed for registrations received after February 26, 2004.

CALL FOR PRESENTATIONS
2004 Illinois Science Teachers Association
ANNUAL CONFERENCE
Interstate Center, Bloomington, Illinois
Tuesday, July 13, 2004

DEADLINE FOR SUBMISSION: POSTMARKED BY MARCH 1, 2004

ATTACH NAMES AND ADDRESSES FOR ALL CO-PRESENTERS SO THEY WILL APPEAR IN THE FINAL PROGRAM.

I can be available for ☐ Friday's program ☐ Saturday's program ☐ either day

PLEASE PRINT OR TYPE AND FILL OUT COMPLETE FORM

<hr/> Name	<hr/> Day phone
<hr/> Affiliation (School or Organization)	<hr/> Home phone
<hr/> Address of above organization	<hr/> Home address
<hr/> City, State, Zip Code	<hr/> County
<hr/> FAX	<hr/> E-mail address

Title of presentation (10 word maximum) _____

Program description as you wish to appear in the program book (25 word maximum)

DUE TO LIMITED SPACE, PRESENTATIONS MUST BE LIMITED TO 50 MINUTES.

I. Type of Session	II. Intended Audience	III. Subject Area	IV. Science Goals
<input type="checkbox"/> hands-on workshop	<input type="checkbox"/> preschool	<input type="checkbox"/> earth and space science	(see back of form)
<input type="checkbox"/> demonstration	<input type="checkbox"/> elementary	<input type="checkbox"/> chemistry	<input type="checkbox"/> Goal 11
<input type="checkbox"/> lecture	<input type="checkbox"/> middle/jr. high	<input type="checkbox"/> physics	<input type="checkbox"/> Goal 12
<input type="checkbox"/> poster session	<input type="checkbox"/> high school	<input type="checkbox"/> biology	<input type="checkbox"/> Goal 13
	<input type="checkbox"/> college	<input type="checkbox"/> ecology/environment	
	<input type="checkbox"/> teacher preparation	<input type="checkbox"/> science/tech/society	
	<input type="checkbox"/> general	<input type="checkbox"/> technology	

IV. Equipment Required ☐ overhead projector ☐ slide projector

Note: We are prepared to furnish only overhead, screen, and slide projector. Other equipment, including computers, needs to be furnished by presenters. If you need any special arrangements or equipment, including internet connection, contact Diana Dummitt ASAP at 217-244-0173, e-mail ddummitt@uiuc.edu

V. How many participants can you accommodate at your session?

☐ 30-50 ☐ 51-80 ☐ 81-150

As a professional, nonprofit organization, the Association is unable to reimburse participants for travel or other conference expenses. **ALL PARTICIPANTS INCLUDING PRESENTERS, ARE REQUIRED TO REGISTER FOR THE CONFERENCE.** This form is not for commercial or non-commercial exhibits. It is only for educators!
All Presentations are required to conform to the NSTA safety guidelines.

Signature _____ Date _____

SEND OR FAX SIGNED FORM AND ABSTRACT TO: Diana Dummitt, ISTA, College of Education, 1310 South Sixth Street, Champaign, IL 61820. FAX 217-244-5437.



ExxonMobil



Illinois Building a Presence for Science

Are you a Point of Contact?

Why not join the over 1500 teachers who are part of Illinois Building a Presence for Science?

It's easy to join! Just visit the ISTA website and follow the directions—it's all electronic!

Only one Point of Contact is allowed per school so hurry!

For upcoming POC/Key Leader trainings, see the ISTA website.

www.ista-il.org

Feeling Powerless?

Take an active role in shaping the future of science education in Illinois by helping coordinate events and opportunities in your region. Contact your Regional Directors to find out how!

Or, look at the current ISTA committees, posted on the next page. Volunteer by contacting the responsible board member listed with each area. Not sure of your region or need contact information? Check out the information on the inside back cover.

ISTA Strategic Plan and Committee Responsibility

The Illinois Science Teachers Association has established the following Standing Committees:

Archives	Awards	Convention	Finance
Membership	Public Relations	Nominations and Elections	

The ISTA Strategic Plan provides guidance and direction for the work of the Standing Committees and any Ad Hoc Committees that may be established. The following committee work descriptions connect the responsibilities of the committee to the various Action Plans of the ISTA Strategic Plan. The Strategic Plan itself can be found at the ISTA website: www.ista-il.org

Standing Committees

Archives

The Archives Committee shall be responsible for the collection and preservation of the records of the Association and other items of historical interest.

Chair: Maurice Kellog

Members: Executive Committee – Andy Apicella, Ray Dagenais, Diana Dummitt, Carl Koch, Marilyn Lisowski, Kevin Seymour, Edee Wiziecki

Awards

The Awards Committee shall be responsible for the selection and nomination of individuals to honored and recognized by the Association. The work of this committee includes the implementation of Action Plan– 2A.

Chair: Nancy Nega

Members: Pam Abbott, Andy Apicella, Bill Donato, Jackie Naughton

Convention

The Convention Committee shall develop a conference theme, plan and secure speakers, presentations, and workshops. The convention chair's duties shall include, but not be limited to, confirmation of site, registration, exhibits, pre-convention mailings, and oversight of the whole program. The work of this committee includes the implementation of Action Plan – 1A.

Chair: Executive Director - Diana Dummitt

Members: Jill Carter, Sandy Gasparovich, Rebecca Hall, Marilyn Lisowski, Julie Schimmelpfening, Karen Zuckerman

Finance

The Finance Committee shall propose a budget to the Board of Directors for adoption each fiscal year.

Chair: Vice President – Kevin Seymour

Members: Executive Director – Diana Dummitt, Wes Heyduck, Treasurer – Carl Koch

Membership
The Membership Committee shall promote membership in the Association and analyze membership trends annually. The work of this committee will include implementation of Action Plan – 6A.

Chair: Carol Widegren

Members: Liza Basden, Diana Dummitt, LaVerne Logan

Nominations and Elections

The Nominations and Elections Committee shall secure candidates and prepare a suggested slate for evaluation by the Board of Directors and conduct the elections.

Chair: Past President - Edee Wiziecki

Members: Regional Directors whose terms are not up for election that year.

Public Relations

The Public Relations Committee shall promote the goals and image of the Association. This work includes the implementation of Action Plan - 6B.

Chairs: Nancy Todd, Marsha Lee

Members: Susan Golden, LaVerne Logan, Larry McPheron

Ad Hoc Committees

Building a Presence Program

The Building a Presence Program Committee will work to meet the goals of the Building a Presence Program. This work includes the implementation of Action Plan – 3B.

Chair: Executive Director – Diana Dummitt

Members: Andy Apicella, Jill Carter, John Clark, Ray Dagenais, Marylin Lisowski, Tracy Trimpe

Professional Development & Partnerships

The Professional Development Committee will work to establish collaborative relationships with other entities. This work includes the implementation of Action Plan – 1C, Action Plan – 3A. and Action Plan – 7A.

Chair: Linda O'Conner

Members: Pam Abbott, Andy Apicella, Rebecca Hall, Nancy Grim Hunter, Larry McPheron, Jacquelyn Meadows, Gwen Pollock, Jim Pudlewski, Pam Stanko, Anna Zuccarini, Edee Wiziecki

Publications Committee

The Publications Committee will work to implement Action Plan – 1B, Action Plan – 2B, Action Plan - 4A, Action Plan - 4B, Action Plan – 5A, Action Plan – 5B, and Strategies 1, 2, and 3, under Action Plan – 6B

Chair: Diana Dummitt

Members: Andy Apicella , Ray Dagenais, Carl Koch, Mike Lach, Larry McPheron, Kevin Seymour, Edee Wiziecki

Minutes of the ISTA General Membership Meeting

October 18, 2003

Pere Marquette Hotel

The minutes of the 2002 General Membership meeting were presented. Ken Carlson made the motion to accept the minutes of the 2002 meeting as presented. Second by Nancy Nega. Motion approved.

Marylin introduced Kay Taft who is a founding member of the ISTA. Mary Keagan, another founding member who regularly attends the ISTA conventions, was mentioned. Marylin introduced the ISTA Regional Directors who were present at the morning session. Marylin requested that all members join in the ISTA Board's mission and become participants in the Association.

Marylin mentioned the newly formed Professional Partnership Committee chaired by Linda O'Connor. She also mentioned the initiative to the Illinois legislature to increase the high school science requirement for graduation. Currently, Illinois high schools have a one-year science requirement. The State legislature should be urged to reinstate funding for the Science Literacy and professional development training for Illinois science teachers. Marylin mentioned that the Illinois State Board of Education is collecting information for a needs assessment. This assessment is necessary to meet the requirements of the new federal Math/Science partnership grants.

Carl Koch, ISTA Treasurer, presented the Treasurer's report. He mentioned that there were large costs involved in the Pheasant Run convention. He also mentioned that money flows through the ISTA from Building a Presence and

Exxon Mobil. He said that the ISTA needs to improve membership numbers.

Nancy Nega was recognized for her work as the ISTA Awards Chair. Nancy mentioned that the Exxon Mobil Exemplary high school science teacher award would be available for 2004. She urged high school science teachers to submit applications for this award and to begin the process. Nancy reported that the 2004 Presidential Award for Excellence in Math and Science Teaching was for science teachers in grades K-6.

The members of the 2003 Convention Committee were congratulated for their efforts in organizing this year's convention. Their efforts are appreciated by the ISTA.

Diana Dummitt presented the Executive Directors report. Diana reported that there is increasing difficulty getting teacher attendance to the convention due to reduced school district funds for professional development.

The 2004 ISTA convention will be held in Bloomington July 12-14. Information about the summer convention will be available at the ISTA web site in November. Diana read the list of Saturday workshops. She also reported that the CPDU forms would be available at the registration table.

Andrew Apicella, ISTA Secretary, presented the proposed changes to the ISTA bylaws to the general membership. Nancy Grim made the motion to accept the changes as presented, second by Like Bonomo. Motion passed.

Wes Heyduck, Regional Director, reiterated the need to get the word out to the membership about the summer meeting. He asked that the Building a Presence program get the message out to all the Points of Contact.

Motion to adjourn at 8:25 a.m. by Joyce Jones.

Donated door prizes were awarded.

ExxonMobil

Are you a Part of the Illinois Science Building a Presence Program?

Join your colleagues today as part of this vital network!

Log on to www.ista-il.org and click on the BaP button.

Are you a Science Key Leader?

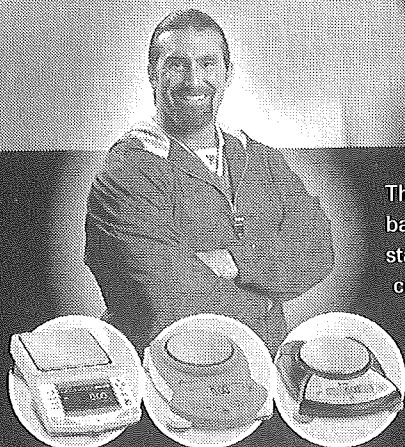
Share your great ideas on science with Illinois teachers. Contact Diana Dummitt to submit an article for Key Leader Focus.

ddummitt@uiuc.edu

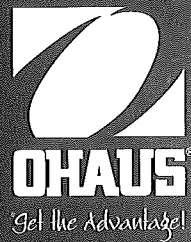


Are you ready to turn **PRO?**

Ohaus introduces style
and performance
on a whole new level
— the Scout® Pro.



The new Ohaus Scout Pro continues in the tradition of our classic Scout balance. For quality, performance — *and value* — it's unbeatable! It lets students start weighing with almost no instruction, and it's loaded with features like parts counting with auto optimization, display hold, % weighing, totalization, and Newtons. Plus Scout Pro comes with a density determination kit for automatic specific gravity calculations. With an optional USB and RS232 interface kit and available software, it's simple to connect Scout Pro to a computer or PDA. All this, and our industry-leading service and support, makes Scout Pro the new star of the winning Ohaus team.



OHAUSPROOHAUSPROOHAUSPROOHAUSPROOHAUSPROOHAUSPROOHAUSPROOHAUSPRO

www.ohaus.com

63 Illinois Science and Math Key Leaders did some mega-networking at **CSynergy**

Listed below are the outstanding Science Key Leaders who participated in the CSynergy Leadership Institute in Champaign, Illinois on July 14-17, 2003. CSynergy is a program of the National Center for Supercomputing Applications and is funded by the Education, Outreach and Training Partners for Advanced Computational Infrastructure (www.eot.org), the National Science Foundation (www.nsf.gov), and the National Science Teachers Association *Building a Presence for Science* program to bring authentic tools of science to K-12 classrooms across the country.

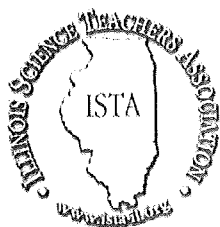
During the four-day leadership program, educators received instruction in the use of modeling and visualization tools—from basic spreadsheet graphing to full 3D data plotting. CSynergy is also helping to create a statewide network of leaders in science and mathematics education. The program is an opportunity for teachers to share experiences, forge connections, and help develop a common language for mathematics and science.

This select group will become the mentors and leaders of tomorrow's teachers. The Education, Outreach and Training Division of the NCSA will offer additional workshops this year to enhance the skills of and deepen the understanding of our state leaders in the areas of mathematics, science and technology. The focus of the institute was to provide ways in which Key Leaders can assist others to implement the Illinois Learning Standards and share his/her information with his/her Points of Contact. More information on this exciting program can be found at: <http://csynergy.ncsa.uiuc.edu> and www.ista-il.org

Mary Barrett
Like Yeng Bonomo
Cathy Carter
Cyndi Selby
Ellen Tallon
Angela Van Brooker
Pam Abbott
Linda Anderson
Georgiean Benson
Catherine Berry
Mark Bosveld
Margaret Brolley
Eeva Burns
Sherry Burris Deets
Kenneth Carlson
Jill Carter

Kevin Collins
Carol Flohr
Terri Franklin
Leonard Freidhof
James Frogge
Walter Glogowski
Susan Grabowski
Elwood Gruschow
Jan Hari
Pam Helfers-Riss
Gail Hermann
Wesley Heyduck
Rita Januszyk
Cheryl Kestner
Carol Kraft
Mary Lou Lipscomb

Coleen Martin
Tim McCollum
Gary Miller
Richard Mitchell
Debra Nowocin
Bill Paine
Steve Ramsdell
Ellen Reilly
Barbara Romack
Marc Tiritilli
Sylvia Tufts
Brian Vincent
Terry Walsh
Loretta Walton
Sharon White
Ali Widmar



ISTA Board Buzzzz...

Minutes of the September 13, 2003 ISTA Board Meeting in Urbana

In Attendance:

Marylin Lisowski
Kevin Seymour
Ray Dagenais
Diana Dummitt
Andy Apicella
Carl Koch
Anna Zuccarini
Larry McPherson
LaVerne Logan
Jill Carter
Rebecca Hall
Pam Abbott
Liza Basden
Wes Heyduck
Jackie Meadows
Jim Pudlewski
Linda O'Connor
Nancy Nega
Carol Widegren
Gwen Pollock

Marylin Lisowski called the meeting to order at 10 a.m. She introduced Gwen Pollock from Illinois State Board of Education, Carol Widegren, the ISTA Membership Chairperson, Linda O'Connor, the ISTA Professional Development Chairperson, and LaVerne Logan, the newest Regional Director. LaVerne Logan is replacing Denny Moore who has left the Board due to family obligations. Marylin asked if there were any items to be questioned from the consent agenda including the minutes of the June Board meeting. No one had questions.

Treasurer's Report. Carl Koch, the ISTA Treasurer, presented the finance committee report and treasurer's report. Carl called attention to the income section of the report and reminded the Board that there is an anticipated \$56,000 from the 2003 Peoria convention with membership registration and vendor registration related to the convention. Carl explained the expenses for a deposit for this year's convention as well as the 2004 summer convention. There were costs for preparing brochures for membership and the printing and mailing of the newsletter. The regional directors have spent no money for activities within regions. Carl reminded the Board of the need for increasing membership and the goal of the Building a Presence program to identify all the Points of Contact by November.



Ray Dagenais, President-Elect and Marylin Lisowski, President, show their appreciation for outgoing Secretary, Deb Greaney and Past-President Edee Wiziecki at last spring's board meeting.

President's Report: Marylin reviewed the resolution matrix from the spring executive Board meeting. The bylaws changes will be presented to the general membership at the October convention. ComEd will not partner with ISTA for this year's ComEd 100 program. Ray Dagenais has linked the strategic plan to the standing committees for the ISTA. The BaP Advisory Board did meet in July. Marylin then presented the resolution matrix from the August Executive Board meeting. Some names have been suggested to serve as the program chair for the Bloomington ISTA convention to be held in July 2004. There is a suggestion to devise an editorial board for the Spectrum. The NSTA has requested a list of members who can serve on the planning committee for the regional NSTA convention to be held in Chicago in 2005. The Executive Board has set the meeting dates and lengths for the 2004 year. The ISTA Board will meet for a Friday night-Saturday meeting on March 5-6 and November 12-13. The Board will also meet at the summer convention in Bloomington, In. order to allow for the overnight meetings the Board members will be housed at the Microtel Hotel (off I-57, exit 239, Olympia Drive). Board members should contact the hotel at 217-398-4136 to reserve rooms for Board meetings and the Board members will need to ask for the ISTA room rate when making their reservations. Marylin proposed the development of a task force to address grants.

22 Fall 2003

Executive Director's Report. Diana presented the report and suggested that it would be possible to design the database of the ISTA membership and the Building a Presence program to allow regional directors and Key Leaders to access the database to locate members and Points of Contact in their geographic region. Access to the database would be by password. Pam Abbott made the motion to allow the BaP and ISTA membership database to be made available on line to regional directors and key leaders in a password protected design. Second by Larry McPherson. Motion passed. Diana addressed the preparations for the 2003 convention. Name tags will be prepared for those who register by October 10, after that date the person will have to make their own name tag at the registration booth at the convention. Diana asked if Jill Carter would like to discuss concerns about the convention. Jill asked for help finding presiders for the sessions with "Illinois science experts" and she asked for help with manning the registration table on Thursday, Friday and Saturday. Jill would like to have a presider at every session (106 sessions) to introduce the speaker and to distribute/collect a short evaluation form for that particular session. Some pre-service teachers may be working as presiders. Jill also suggested that the committee for the future convention should be working with the committee from the current convention to help in planning, learning and allow for improvement in the conventions. Diana addressed the BaP program and mentioned that some Key Leaders who were not active have been removed and there is a drive to identify the Points of Contact throughout the State. Mike Lach of the Chicago Public Schools will be identifying Key Leaders and Points of Contact for the CPS system. Diana also mentioned that Tom Pence from Delta has offered to help sponsor the BaP and allow for the Spectrum to be placed on-line in a password protected format.

Membership Report. Carol Widegren mentioned that she has been in communication with Diana about ideas to increase membership. Marylin asked the Board members to contact Carol with ideas for recruitment of members.

Awards Report. Nancy Nega reported that Wednesday was the day for application to have been postmarked for the Exxon-Mobil Exemplary High School Teacher Award. Several applications have been received already. The selection committee (Bill Donato, Jackie Naughton, Pam Abbott, and Nancy Nega) will meet and notify the award winner by October 16. At the convention's Friday recognition luncheon the three Illinois finalists for the Presidential Award for Excellence will be recognized and the ISTA members who have been awarded National Board Certification will be recognized. Nancy asked what other awards need to be identified and Radioshack, Ohaus, Biology Teacher of the Year, and Groundwater teacher were identified.

Professional Development Report. Dr. Linda O'Connor posed the question to the Board of what would like a professional development committee to do? She asked if the Board saw the committee to serve as a clearinghouse for workshops throughout the State. Linda mentioned that there are a growing number of school districts that are denying their teachers release time to attend workshops. Many districts are keeping professional development in house. It may be beneficial to over on-line professional development opportunities to the ISTA membership. Pam Abbott suggested an online lab safety guidelines program. Linda asked if it would be possible to videotape the Flinn presentation at the October pre-conference meeting. This tape may be able to be offered to membership or placed online in segments. Linda asked if there was a promotional piece about the ISTA that could be used when trying to make connections with potential partners. Agencies that have similar interests in science education (IABT, ICS, IASCD, IDNR) might be asked to attend planning meetings of the future conventions. Gwen Pollock asked if the summer 2004 convention had a theme and suggested the Bloomington convention theme might relate to the umbrella nature of ISTA to professional development of science educators.

Illinois State Board of Education. Gwen Pollock presented an overview of the Illinois Math and Science Partnership Program. To be eligible participants must have these requirements: university with science education and engineering programs, a local education agency that has either 40% of its students below meets and exceeds level or with issues of teacher quality when not all math/science teachers hold full certification in their assignment. Gwen presented a number of focus points for the new grant program. The program has divided the State of Illinois into 8 zones. Each zone has \$400,000 from the program. Agencies in these eight areas will be able to compete for portions of the money allocated for their area. The RFP for this program will be out shortly and due back within 45 days. Gwen presented a needs assessment form that all teachers who participate in the program will be asked to complete. All teachers may provide input through this needs assessment. ISTA may want to promote it summer 2004 convention as part of the summer professional development that would be part of this federally funded program.

Strategic Plan/Ad Hoc Committees. After lunch Ray introduced the strategic plan and ad hoc committees of the association. Ray asked all Board members to select a committee and then meet in committee groups. The following are the reports from those sessions.

Awards. Plans for how to handle the recognition luncheon at the October convention was discussed. Also the committee sees the need to promote the 2004 Exxon-Mobil Award at the October convention. The application deadline for 2004 would need to be June 1.

Convention. Jill said that plans are moving along. She needs people to work the ISTA booth during the convention. There also needs to be clear language on the ISTA web site to locate the online registration form. Gwen asked about having convention participants complete the ISBE math/science needs assessment forms as either hard copies or electronically.

Membership. Liza suggested that membership be linked to the registration for the Bloomington convention. There is a need to promote membership to the pre-service teachers. It was suggested the ISTA pursue joint membership with related science education groups.

Professional Development. The committee compiled a list of potential partners and a list of important professional development examples.

Publications. They will pursue the offer made by Delta about providing the Spectrum online. The committee also discussed the need for having an editorial board for the Spectrum with a managing editor and editors for different levels (elementary, middle school, high school, higher education, government agencies)

Ray reminded the chairpersons of the committees to keep in communication with the members of the committee between Board meetings.

Nominations and Elections.

Marylin reminded the Board members that there will be an election in January for seven regional directors. It is the responsibility of the regional directors who were installed in March 2003 to identify and recruit candidates for the 2004 election. Edee Wiziecki has sent the nomination forms to all Board members electronically. Completed nomination forms are to be returned to Edee by October 15. Marylin urged the Board members to find active

members to participate on the ISTA Board.

Regional Reports. Marylin reminded the Board that earlier in the year the Board had removed the penalties (withholding reimbursement checks for mileage or hotels/meal costs) associated with Regional Directors who did not submit quarterly reports. Less than half of the current regional directors submitted reports for this meeting. Marylin asked how to get the directors to turn in their reports. Pam Abbott and Larry McPherson asked for the regional report forms to be sent out three weeks prior to the Board's meeting date.

Other Business. Andy Apicella asked if the ISTA could provide business cards for the regional directors and Board members. Liza Baden will pursue this.

Future Meetings. The next ISTA Board meeting will be on Saturday, December 13, 2003 in Urbana. Regional Director quarterly reports will be due to Diana Dummitt by December 1.

The next Executive Board meeting will be on Saturday, November 14, 2003 in Urbana.

Adjourn. Meeting was adjourned at 1:50 p.m.

Enter Your Students in the Toshiba/ NSTA ExploraVision Awards Competition



Challenge your students to think creatively about scientific innovation and future technologies, and they could win a variety of prizes, including savings bonds, digital cameras, laptop computers, and a trip to Washington, DC. Now in its 12th year, ExploraVision is a team competition for K-12 students of all interest, skill, and ability levels in which they combine imagination with the tools of science to research and design a technology that could exist 20 years in the future. Participating in ExploraVision is challenging and fun and can serve as a catalyst for experiencing the joys and wonders of science.

Gifts and certificates are awarded to all students who submit an entry. The entry deadline is **Feb. 3, 2004**. Visit www.exploravision.org for competition details, rules, and entry forms and to view winning projects from previous years, or call 1-800-EXPLOR9. ●

Articles

Visit a Challenger Learning Center Near You!

Challenger Learning Center— St. Louis

Mellisa Duncan
Senior Flight Director
314-506-9056
314-506-9146 (fax)

Missouri students and teachers can now launch into Mars at the Challenger Learning Center-St. Louis, scheduled to open in November 2003. The Challenger Learning Centers were founded by family members of the astronauts who tragically lost their lives in the 1986 Challenger Space Shuttle disaster.

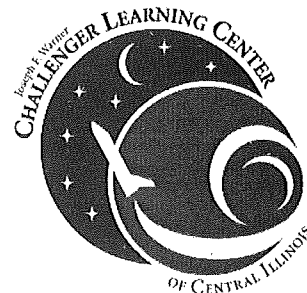
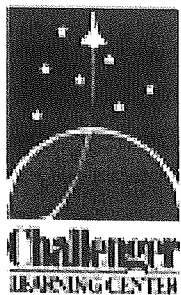
Scheduled visits to the Challenger Learning Center-St. Louis will feature groups of 18-36 students, who will spend two hours conducting a mission to Mars. Using space as a theme and the power of simulations as a teaching tool, students will be engaged in a learning experience of activities similar to those performed by real NASA astronauts, scientists and engineers. The center features state-of-the-art simulators, including an orbiting space station and a Mission Control center modeled after NASA's

Johnson Space Center.

Teachers participate in an in-service training to help them prepare their students for the Mars mission. All of the materials associated with the CLC-St. Louis experience are aligned with the Missouri Show-Me standards.

The Challenger Learning Center-St. Louis is made possible through a regional partnership between the St. Louis Science Center, the Ferguson-Florissant School District and the Cooperating School Districts. For more information, please contact Tasmyn Scarl Front, Director of the Challenger Learning Center-St. Louis, at 314-506-9144.

Inspiring. Exploring. Learning.
It's our mission.



Bloomington Challenger Learning Center Opens!

In this Centennial of Flight year, the Prairie Aviation Museum in Bloomington, Illinois, is helping you and your students reach for the stars. In the past 20 years, Prairie Aviation Museum has restored a DC-3 aircraft to flying condition, maintained a collection of static display planes and helicopters, displayed exhibits addressing nearly every topic in aviation history, and provided air shows, activities, and events for aviation enthusiasts of all ages. However, the Prairie Aviation Museum's most ambitious offering yet, the Challenger Learning Center of Central Illinois, will be unveiled to the public this December – and YOU ARE INVITED TO THE SPECIAL EVENT!

The Challenger Center for Space Science Education is a national nonprofit organization started by the families of the Challenger Astronauts. As a living memorial to the Challenger Seven, Challenger Learning Centers provide an opportunity for students to develop their mathematics, science, and technology skills as they run their own simulated space mission. By participating in a Challenger Learning Center mission, students in grades 5 through 8 experience first-hand what it is like to be an astronaut aboard the Space Station and technicians in Mission Control. Currently, there are almost 50 Challenger Learning Centers in the United States, Canada, and Great Britain, including one in Woodstock, Illinois, and one in Hammond, Indiana. By the beginning of 2004, however, there will also be one in St. Louis, Missouri, as well as Bloomington, Illinois.

A Challenger Learning Center mission is not a video for your students to watch, nor is it a game for them to play. In their mission, your students will use the mathematics, science, technology, communication, and problem-solving skills they learned in your classroom to accomplish their goal – to rendezvous with a comet. They will have to navigate their way through space, build and launch a probe, test samples of water, rocks, and plants, monitor medical status of the astronauts, and react to any unexpected emergencies that may occur!

Throughout their mission, students also develop practical life skills. They must check blood pressure and temperature, test electrical circuits, and use proper safety precautions when encountering unknown substances all while using their problem-solving, communication, and leadership skills.

Obviously, the responsibilities your students have during a mission require thorough preparation. The Challenger Learning Center helps you prepare your students. After you reserve a mission for your class, you will attend a CPDU certified Teacher Training Workshop. At this workshop, you will run a simulated space mission with other teachers, and the Challenger Learning Center will provide you with 4-6 weeks of classroom-ready activities that will prepare your students for their mission. These classroom activities are not designed to be “extras” in your curriculum.

Instead, these activities take the concepts that you are already teaching and provide a structure in which those lessons become stepping-stones to the successful completion of a space flight mission. Therefore, the provided curriculum is designed to improve upon and replace some of the lessons that exist in your current curriculum.

The goal of the Challenger Learning Center is to provide meaningful mathematics and science activities in a hands-on, engaging learning environment.

The Learning Center experience, including the provided curriculum and the mission itself, is aligned with NSTA’s National Science Education Standards as well as NCTM’s Principles and Standards for School Mathematics. In fact, the Challenger Learning Center curriculum and mission helps to satisfy *over 60* Illinois Learning Standards in Science, Mathematics, English/Language Arts, and Social Studies. Furthermore, the activities included in the experience help to satisfy the *Applications of Learning* portion of the Illinois Learning Standards.

In 1986, the Challenger Space Shuttle, with the Teacher in Space program, launched as an educational mission. That mission to educate and inspire future generations of astronauts, scientists, and citizens continues today through the Challenger Center for Space Science Education.

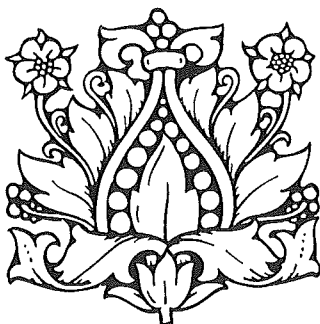
December 17, 2003 brings two important events to Central Illinois. Not only will the Prairie Aviation Museum celebrate the Centennial of Flight, but also it will formally present its new Challenger Learning Center to the public.

As an educator, you have the opportunity to preview the Challenger Learning Center of Central Illinois before that public presentation. On Monday, December 15, from 4:00 p.m. to 8:00 p.m., Prairie Aviation Museum will host an Educator Open House at the new

Challenger Learning Center of Central Illinois site, located in the former terminal of the Central Illinois Regional Airport. At this Educator Open House, you can tour the Challenger Learning Center, listen to a special guest speaker, and register for a chance to win a free mission for your class of 16-32 students.

For more information about Challenger Learning Center of Central Illinois offerings, please write or call:

Janet Moore
Challenger Learning Center of
Central Illinois
c/o Prairie Aviation Museum
2929 E. Empire St.
Bloomington, IL 61704
Phone: 309.661.1621
Fax: 309.663.8411
www.ChallengerCentralIllinois.org
Info@ChallengerCentralIllinois.org



Bloomington Challenger Center Educator Open House

Event Details

December 15, 2003

Challenger Learning Center
2901 E. Empire
Bloomington, IL

Tours of Challenger Learning Center for area educators;
Speak with Flight Directors about CLC opportunities for
your students; Sign up for a chance to win a free mission for
16 to 32 of your 5th through 8th grade students;
Refreshments provided. Special guest speaker, astronaut
trainer Jerry Miller at 6 p.m. A great opportunity!

Albert Einstein Invites You to Apply:

*Paid Academic Year Fellowships in Washington D.C.
Serve in Congress and in Many Federal Agencies
Professional Travel and Relocation Allowances*



To Apply: Please visit
www.scied.science.doe.gov
For information: Please visit
www.trianglecoalition.org

Special Interests

Resources from Holbrook Global Field Expeditions

Bird Sites

Partners In Flight, a non-profit concerned with neotropical migrants, features a useful guide to local species in the US by region. Includes conservation recommendations for each physiographic area, bird lists, pictures and descriptions of species, as well as scientific details about the habitat. Highly recommended as you study the conservation of local birds.

<http://www.blm.gov/wildlife/pifplans.htm>

FREE - Nice series of downloadable Fact Sheets from the Smithsonian National Zoological Park. Web site also contains some current research abstracts - check out: "Symposium: Birds for Two Worlds" - as well as other resources.

http://nationalzoo.si.edu/ConservationAndScience/MigratoryBirds/Fact_Sheets/default.cfm

International Migratory Bird Day has a list of affordable teaching materials <http://www.birdday.org/bdstore/index.cfm>

Bird slides at special cost to teachers and professors.

<http://www.acnatsci.org/research/vireo/lectures.html>

FREE - Cornell Lab of Ornithology list of resources and teaching ideas for middle school educators: http://www.birds.cornell.edu/schoolyard/T_Resouces/index.html

A Guide to Bird Education Resources: Migratory Birds of the Americas, An Annotated Bibliography. Recommendations for curricula and other resources.

<http://www.americanbirding.org/programs/eduresgde.htm>

Where do the birds go in the winter? Travelers to Costa Rica, Belize, Peru and other southern destinations can use The Smithsonian National Zoological Park's nifty database to identify which local favorites might be spotted abroad!

http://nationalzoo.si.edu/ConservationAndScience/MigratoryBirds/Bird_Lists/default.cfm

International Projects

Your coffee choice can impact bird habitat. Fascinating story of science, conservation and international cooperation makes for a great classroom investigation. Here are some links to get you started:

An ornithologist explains the habitat situation and provides a comprehensive glossary for the issue.

<http://americanbirding.org/programs/consbcof3.htm>

Go to <http://www.aza.org/ConEd/IMBD/#lis> and click on "Shade-Grown Coffee

Information" for a good list of articles compiled by AZA.- Song Bird Coffee is the product of a joint venture between the American Birding Association (ABA) and Thanksgiving Coffee Company. Together they offer the Song Bird line of shade-grown coffees to enable bird lovers and coffee lovers and everyone to vote with their pocketbooks for the survival of bird habitat while enjoying superb coffee.

<http://www.songbirdcoffee.com/sb-home.html>

Coffee Kids is an international non-profit organization established to improve the quality of life for children and families who live and work in coffee-growing communities around the world. Coffee Kids programs are locally directed, community based, and founded on the principles of sustainability.
www.coffeekids.org

The American Birding Association has an easy volunteer task for anyone planning to travel to Latin America - act as a courier by bringing a small packet of donated birding equipment to a needy birding project. Check it out at:

<http://americanbirding.org/programs/consbexc.htm>

Birding Program for Educators - American Birding Association endorsed courses. Click here to find out details about upcoming opportunities to trek with experienced ornithologists.

<http://www.holbrookeducationtrips.com/pd-aba.htm>.

Holbrook and the American Birding Association are partnering to present Birds and Biodiversity of Costa Rica: A Workshop for Young Birders. Go to <http://www.americanbirding.org/programs/ygbconf.htm>

Domestic Projects

Backyard Feeders - Helping or Hurting? New research answers this and other questions about how to have a safe and successful bird feeder in your backyard or schoolyard.

<http://magazine.audubon.org/backyard/backyard0001.html>

Read how bird counting is a way for citizen's to participate in science: http://magazine.audubon.org/features0212/citizen_science.html

"Classroom FeederWatch", developed by the Cornell Laboratory of Ornithology, is an exciting research and interdisciplinary education curriculum designed for students in grades 5-8. Students may use the program to fully participate in an annual feeder-bird survey conducted by ornithologists at the Lab and be part of 'real science'. <http://birds.cornell.edu/cfw/>

Plant some trees, spread some seeds, create a schoolyard habitat for migratory birds and other wildlife and then certify your project with the National Wildlife Federation: <http://www.nwf.org/schoolyardhabitats/>

Field Trip! A list of International Migratory Bird Day Events at Zoos & Aquariums <http://www.aza.org/ConEd/IMBDEventsList/>

Save Red-Winged Blackbirds through a letter writing campaign with the Audubon Society: http://www.audubon.org/campaign/blackbird/save_the_blackbirds.html

Geographic Spotlight - Peru

Amazonian Basin, Andes Mountains, coastal environments, and deserts are all found in the country of Peru. Explore the immense biodiversity and rich cultural heritage of Peru! Environmental Symposium 2003 - Details and Photo Album: <http://www.holbrookeducationtrips.com/pd-peru-symposium.htm>

Smithsonian Magazine - Machu Picchu: http://www.smithsonianmag.si.edu/smithsonian/issues03/mar03/macchu_picchu.html

Time Magazine - February 24th 2003 Issue - Article on Machu Picchu: http://www.time.com/time/archive/preview/from_redirect/0,10987,1101030224-423533,00.html

Readers Digest - Getting to know Manu: information and academic resources: <http://www.pbs.org/edens/manu/>

World Heritage Site: http://www.wcmc.org.uk/protected_areas/data/wh/manu.html

Andean Institute of Archeological Studies
<http://whc.unesco.org/whreview/article5.html>



For more information on these and other programs, contact:

Sandy Doss

Vice President of Academic Programming
Holbrook Global Field Expeditions

800-396-0763 (direct)

888-890-0632 (corporate)

<http://www.holbrookeducationtrips.com/>

SURVEYING SOUTH AFRICA'S ENVIRONMENTS

South Africa is a colorful country with a soul that speaks through its breathtaking terrains, wildlife and captivating people. Explore unique ecosystems teeming with wildlife, fascinating marine diversity, and other outstanding examples of natural wealth all under the guidance of dynamic experts. Study examples of conservation and the impact these efforts have on the local society. All these experiences and more await you on this enriching course designed for environmentally oriented adventurers.

Program Highlights

- **Wildlife Safaris** - Observe a wide range of species unique to the area. Search for elephants, wildebeest, white rhino, lions, buffalo, leopards, cheetahs, and much more. Bird life is abundant - ornithology enthusiasts will not be disappointed.
- **Expert-Led Discussions**- South African biologists, naturalists, and historians will provide expert knowledge as you investigate various topics in the field.
- **Cultural Exchange** - Stay in a traditional Zulu hut and observe their customs and rural life first-hand. Visit open-air markets and meet local artisans.
- **Examine Conservation Efforts** - Visit the Kapama Research and Breeding Center and game reserves and investigate their breeding and habitat restoration projects.
- **Explore Marine Diversity** - Learn about sea creatures from experts on land and then swim with marine life during a snorkeling outing in a magnificent lagoon.
- **Discover Unique Flora** - Study examples of plant life not found anywhere else on earth at the famous Kirstenbosch Botanical Gardens.
- **Enjoy Breathtaking Natural Vistas** - Including the majestic Table Mountain and the legendary Cape of Good Hope and more.
- **Investigate Cape Town and Pretoria** - Explore these modern cities full of history and impressive architecture.

Please contact Marilyn Lisowski at mlisowski@eiu.edu or at 217/581-7830 or Sandy Doss at SDoss@Holbrooktravel.com or toll free at 800-396-0763.

30 Fall 2003

The Best Kept Secret

WHAT: Illinois Junior Science & Humanities Symposium. A program funded by the U.S. Depts of Army, Navy, and Air Force to encourage high school students to conduct original scientific research in the sciences, mathematics, and engineering.

Students present their original research in formal paper session and in an informal poster session. Participants also choose two laboratory sites on or off-campus to visit and participate in mostly hands-on activities (one of their favorite opportunities!).

WHO: 4 high school students and their teacher

WHERE: SIU- Carbondale

COST: All registration fees, housing, and planned meal functions during the symposium are covered by the program. Only cost to your school is transportation and substitute pay while you are gone (2 days).

WHEN: March 28-30, 2004. For a tentative schedule of activities, go to <http://www.science.siu.edu/ijshs/tentative.html>. To see a review of the 2003 symposium, go to <http://www.science.siu.edu/ijshs/2003.html>

HOW: Teachers submit nomination form by December 5, 2003. Also signed consent forms (all students and teachers), and student biographical sketches and photos (for students planning to make a paper or poster submission). Papers, abstracts, and Statements on Assistance are due on January 23, 2004. A team of faculty review the papers and select those for formal presentation and offer the other students an opportunity to present their research in the poster session and gain experience for a future paper submission.

APS Careers in Physiology

Brochure

The American Physiological Society (APS) announces a new Careers in Physiology color brochure that is available to all interested teachers and students. The brochure explains what physiology is, what physiologists do, why physiology is important, and how to become a physiologist. It also contains short biographies of several physiologists who are employed in a wide variety of physiology careers.

This brochure is part of a new careers outreach program of The American Physiological Society and was produced in conjunction with a totally new careers website (<http://www.the-aps.org>; click on "Careers"). The new website has information available to students at different educational levels. Included on the web site are physiology experiments for students to try, biosketches of many physiologists involved in different areas of physiology, extensive information on careers in physiology and other life sciences, awards available to students, resources specifically for minority students, and much more.

For your free copy of the new APS Careers in Physiology brochure, send your request to education@the-aps.org. Up to 300 copies are available free to teachers and for career fairs.

ISTA Member Bob Williams Receives Illinois River Valley Conservation Award

In appreciation for the difference that one person can make in a community, and celebrating successes this person has had in bringing conservation awareness to the children of Illinois, The Nature Conservancy recognized Dr. Robert Williams with the Illinois River Valley Conservation Award. The award was presented to Williams during the evening program of the Illinois River Coordinating Council meeting, Tuesday, October 7. Williams is a professor emeritus with Southern Illinois University at Edwardsville.

Williams has brought conservation awareness to the children of Illinois through a number of creative environmentally-based programs he has introduced to the schools during the past 15 years. He created The Rivers Project, the Illinois Middle School Groundwater Project, Zebra Mussel Mania, the Gateway Storm Sewer Stenciling Project and the Annual Clean Water Celebration held each March in Peoria. These programs open doors for students, helping them gain knowledge and the desire to learn more about river issues that impact the health of the Illinois and Mississippi Rivers.

Doug Blodgett, Illinois River Project Director with The Nature Conservancy stated, "Bob helps students find the river. By putting them in touch with the river he is giving them ownership and insuring the interest in river conservation for future generations. The future is in their hands."

Recipients of The Nature Conservancy's Illinois River Valley Conservation Award demonstrate outstanding work and leadership over a sustained period of time. The award is designed to recognize outstanding individual achievement in river conservation. Past recipients include Frank Bellrose, Lt. Governor Bob Kustra, William L. Rutherford, James W. Baldwin and Congressman Ray LaHood.

The Nature Conservancy is a leading international, non-profit organization that preserves plants, animals and natural communities representing the diversity of life on Earth by protecting the lands and waters they need to survive. To date, the Conservancy and its more than one million members have been responsible for the protection of more than 14 million acres in the United States and have helped preserve more than 102 million acres in Latin America, the Caribbean, Asia and the Pacific. Visit us on the Web at nature.org. For more information about the work of The Nature Conservancy in Illinois visit us on the Web at nature.org/illinois.

*Do you have a successful unit for
Linking Science with Math and
Technology?*

*Please share your great idea with
your colleagues by submitting it to
the Spectrum!*

Deadline: February 1, 2004

Are you a Shutterbug?

Why not share your photos with us for publication in the Spectrum? Whether they are photos taken at a recent workshop, in your classroom, or an outdoors scene, as long as they are high contrast color or black and white, send them in!

Are you a current member?

Check the label on the back cover. If it says Dues to 1/2004 this will be the last Spectrum you will receive. Don't Miss Out! Renew today!

ISTA Membership Categories

Option 1: Full Membership Dues- \$35.00 Full Membership entitles individuals interested in Illinois science education to the following benefits: a one year subscription to the SPECTRUM, and ISTA ACTION; notification of regional conferences and meetings; invitations to science issues activities; a reduced registration fee for the Annual ISTA Conference; voting privileges; and the opportunity to hold an ISTA Officer position.

Option 2: Two-Year Full Membership Dues- \$60.00 — Two-Year Full Membership entitles member to Full Membership benefits for two years.

Option 3: Five Year Full Membership Dues- \$125.00 — Five Year Full Membership entitles member to Full Membership benefits for five years.

Option 4: Associate Membership Dues- \$15.00 — For full-time students and to individuals who are on retirement status. Entitles member to Full Membership benefits, with the exception of voting privileges and the opportunity to run for office.

Option 5: Institutional Membership - \$75.00 — Institutional Membership entitles the member institution, for a period of one year, to two subscriptions to the SPECTRUM and ISTA ACTION; notification of regional conferences and meetings; invitations to science issues activities; and a reduced registration fee for the Annual ISTA Conference for a maximum of three members of the institution.

ISTA REGIONAL DIRECTORS

REGION II

Larry McPherson
Boylan Catholic High School
Rockford
lamcp@hotmail.com

Laverne Logan
Western Illinois University
LK-Logan@wiu.edu

REGION III

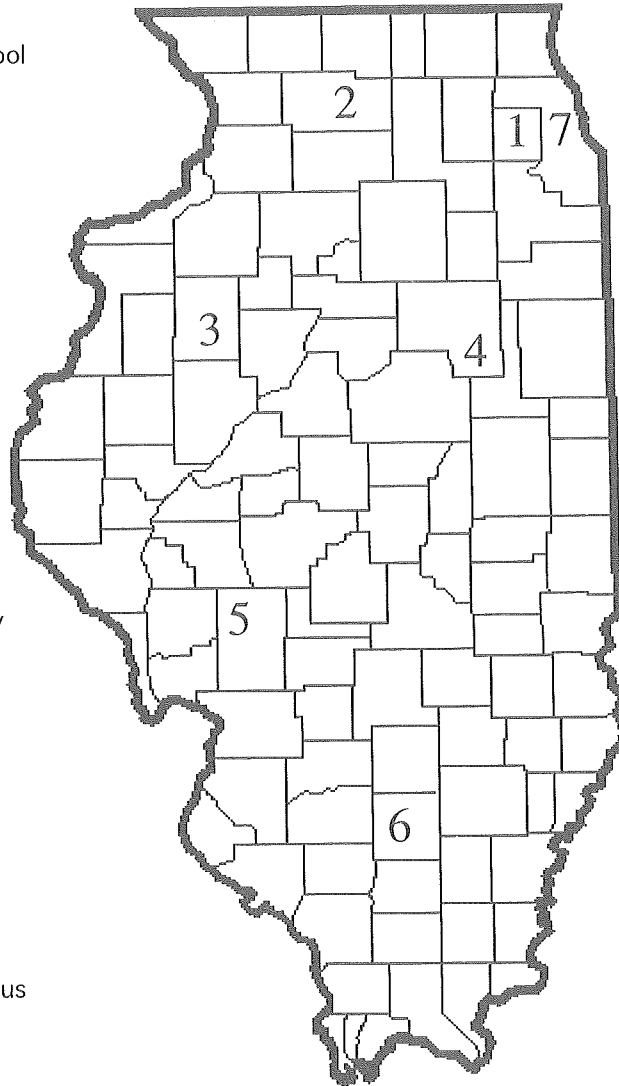
Jill Carter
Pekin Comm. H.S.
jcarter@pekinhigh.net

Donald Powers
Curriculum & Instruction
Western Illinois University
DT-Powers@wiu.edu

REGION V

Pam Abbott
RCUSD #1
Roxana
pabbott@madison.k12.il.us

Liza Basden
Highland High School
lbasden@highlandmadison.k12.il.us



REGION VII

Jim Pudlewski
Chicago
jpudlewski@aol.com

Nancy Grim Hunter
Chicago State University
n-grim@csu.edu

REGION I

Richard Mitchell
Valley View Dist. 365U
Romeoville
mitchellrc@vvsd.org

Anna Zuccarini

Crone Middle School
Naperville
azuccarini@wideopenwest.com

REGION IV

Rebecca Hall
Prairie Flowers
University of Illinois, Urbana/
Champaign
hall@life.uiuc.edu

Susan Golden

Dist. 161
Decatur
sgolden@dps61.org

REGION VI

Wesley Heyduck
Fairfield Community High School
wheyduck@fchs.wayne.k12.il.us

Jacqueline Meadows
Egyptian Elementary School
Tamms
wbdoodle@yahoo.com



ILLINOIS SCIENCE TEACHERS ASSOCIATION 2004 MEMBERSHIP APPLICATION

PLEASE PRINT OR TYPE AND FILL OUT COMPLETE FORM

Name	Day phone
Affiliation (School or Organization)	Home phone
Address of above organization	Home address
City, State, Zip Code	City, State, Zip Code
e-mail and/or FAX	County in Illinois

CHECK APPLICABLE CATEGORIES IN EACH COLUMN

- | | | |
|---|--|--|
| <input type="checkbox"/> Elementary Level | <input type="checkbox"/> Elementary Sciences | <input type="checkbox"/> Teacher |
| <input type="checkbox"/> Middle Level | <input type="checkbox"/> Life Science/Biology | <input type="checkbox"/> Administrator |
| <input type="checkbox"/> Senior High School | <input type="checkbox"/> Physical Sciences | <input type="checkbox"/> Coordinator |
| <input type="checkbox"/> Community College | <input type="checkbox"/> Environmental Science | <input type="checkbox"/> Librarian |
| <input type="checkbox"/> College/University | <input type="checkbox"/> Earth Science/Geology | <input type="checkbox"/> Student |
| <input type="checkbox"/> Industry/Business/
Government | <input type="checkbox"/> Chemistry | <input type="checkbox"/> Retired |
| <input type="checkbox"/> Other _____ | <input type="checkbox"/> Physics | |
| | <input type="checkbox"/> General Science | |
| | <input type="checkbox"/> Integrated Science | |
| | <input type="checkbox"/> Other _____ | |

Send form and check or money order made payable to Illinois Science Teachers Association to:
Diana Dummitt, ISTA Membership, College of Education, University of Illinois, 1310 S. Sixth Street,
Champaign, IL 61820

MEMBERSHIP OPTION (See page 32) _____

AMOUNT ENCLOSED _____

ISTA SPECTRUM
UNIVERSITY OF ILLINOIS
COLLEGE OF EDUCATION
1310 S. SIXTH STREET
CHAMPAIGN, IL 61820

NON-PROFIT ORGANIZATION
U.S. POSTAGE PAID
CHAMPAIGN, IL 61820
PERMIT #75

*****AUTO**3-DIGIT 525 66 13
Dues to 2004
Gary L. Butler
420 S Tower Rd
Dawson IL 62520-3392



FALL 2003